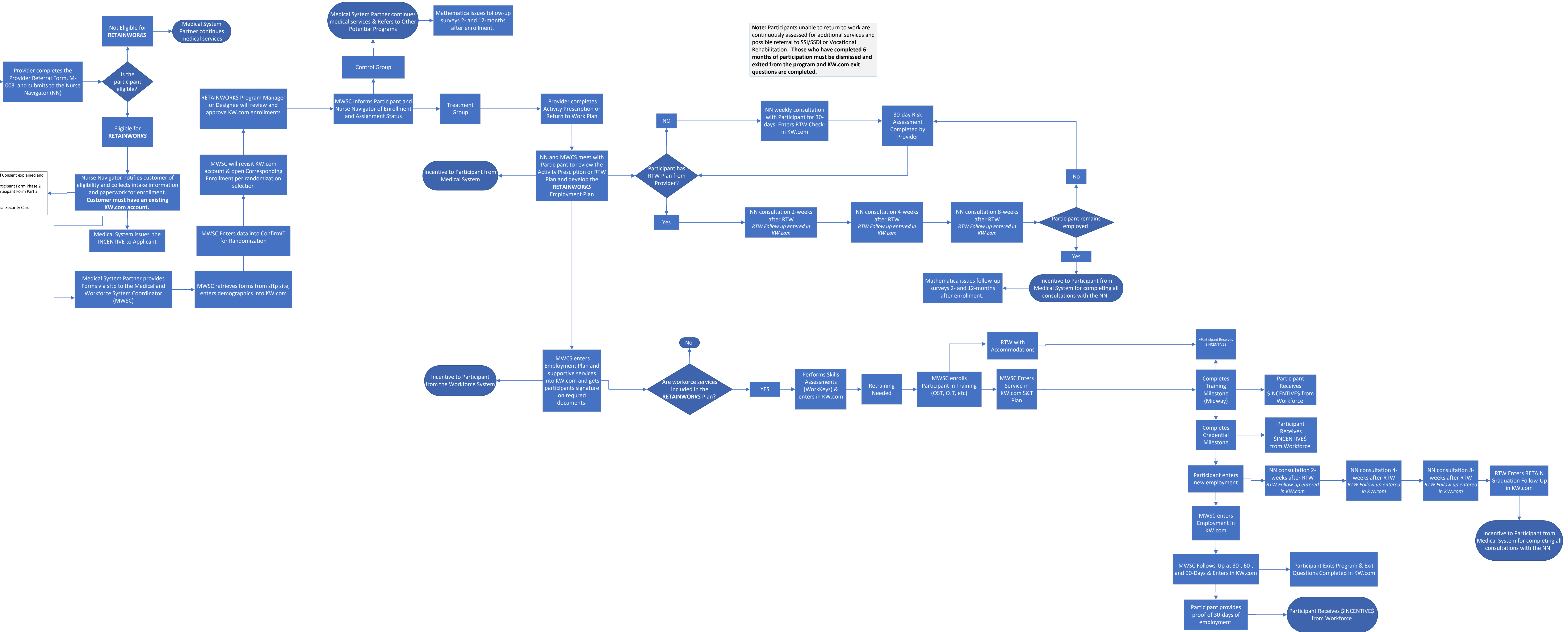


Referral Options
 Customers may be referred to **RETAINWORKS** via self referral, an employer, a clinician, or from the workforce system. However, everyone must be seen by a provider willing to complete the Provider Referral form to begin the intake process. Customers can go directly to a participating **RETAINWORKS** provider, the Nurse Navigator can help a customer initiate the appointment for the Provider Referral, or the Nurse Navigator can request a Provider Referral from a recent visit with a provider.

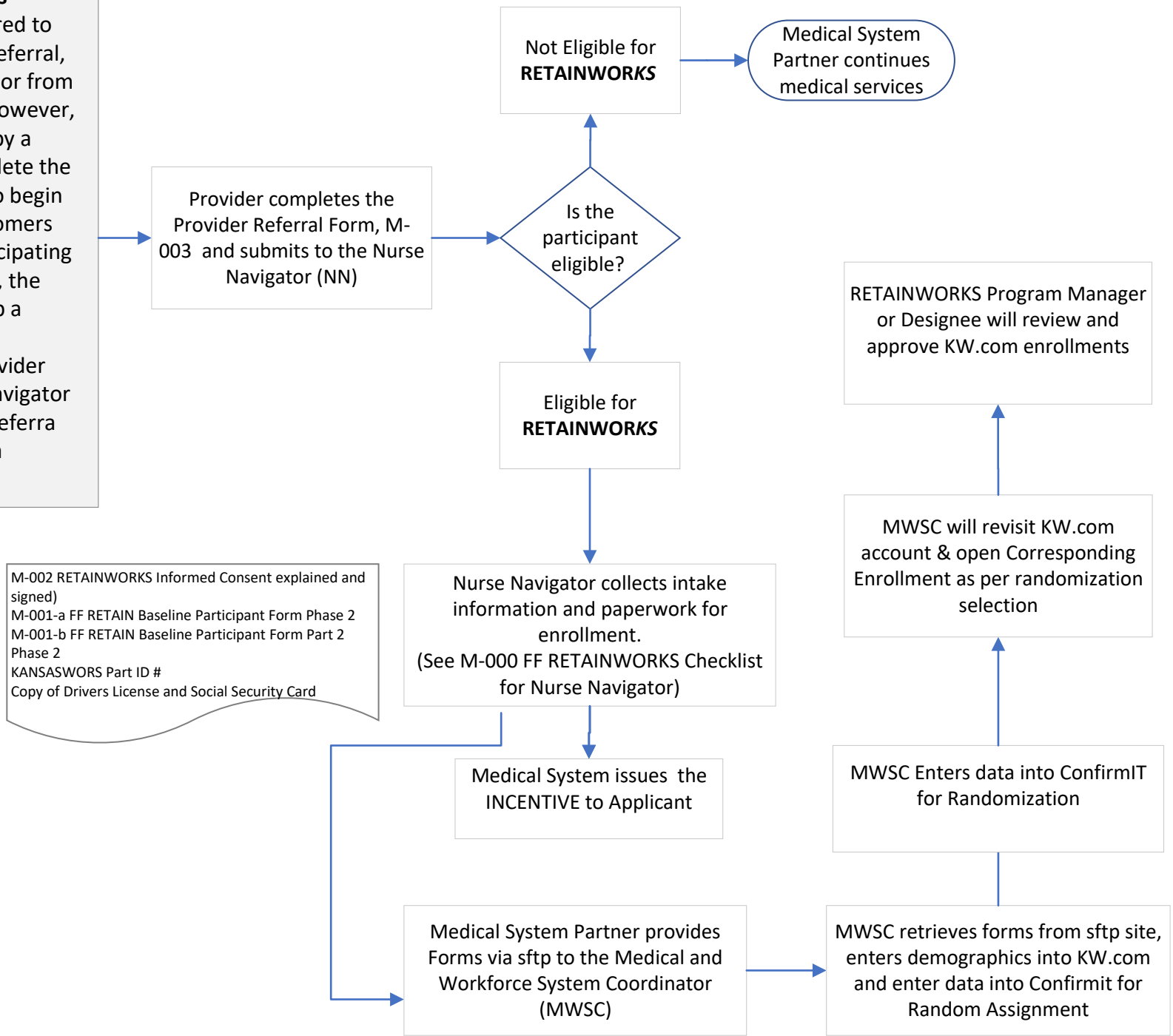
M-002 RETAINWORKS Informed Consent explained and signed)
 M-001-a FF RETAIN Baseline Participant Form Phase 2
 M-001-b FF RETAIN Baseline Participant Form Part 2 Phase 2
 KANSASWORKS Part ID #
 Copy of Drivers License and Social Security Card

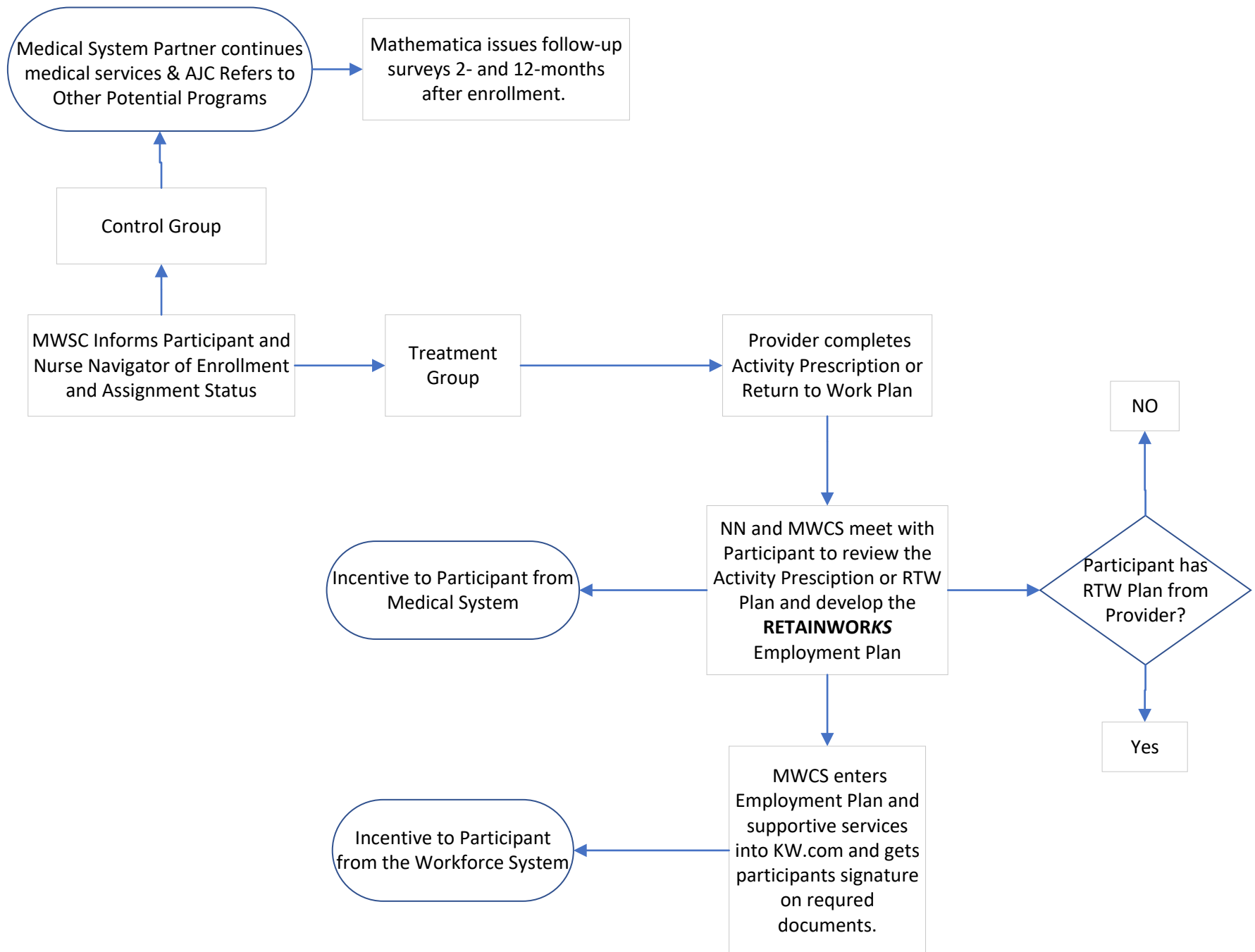
Note: Participants unable to return to work are continuously assessed for additional services and possible referral to SSI/SSDI or Vocational Rehabilitation. **Those who have completed 6-months of participation must be dismissed and exited from the program and KW.com exit questions are completed.**

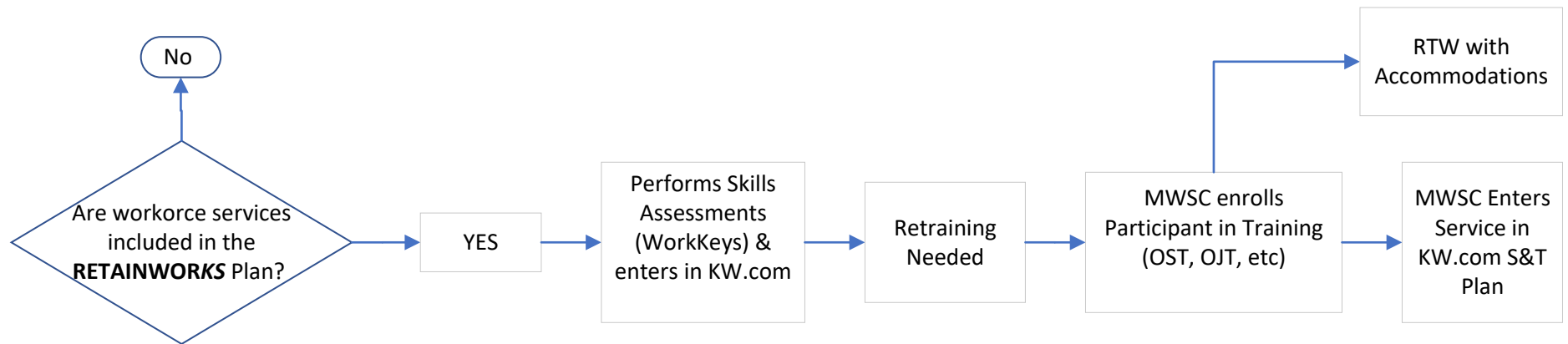


Referral Options

Customers may be referred to **RETAINWORKS** via self referral, an employer, a clinician, or from the workforce system. However, everyone must be seen by a provider willing to complete the Provider Referral form to begin the intake process. Customers can go directly to a participating **RETAINWORKS** provider, the Nurse Navigator can help a customer initiate the appointment for the Provider Referral, or the Nurse Navigator can request a Provider Referral from a recent visit with a provider.







NN weekly consultation with Participant for 30-days

30-day Risk Assessment Completed by Provider

Note: Participants unable to return to work are continuously assessed for additional services and possible referral to SSI/SSDI or Vocational Rehabilitation. **Those who have completed 6-months of participation must be dismissed and exited from the program.**

NN consultation 2-weeks after RTW
RTW Follow up entered in KW.com

NN consultation 4-weeks after RTW
RTW Follow up entered in KW.com

NN consultation 8-weeks after RTW
RTW Follow up entered in KW.com

Participant remains employed

No

Yes

Incentive to Participant from Medical System for completing all consultations with the NN.

